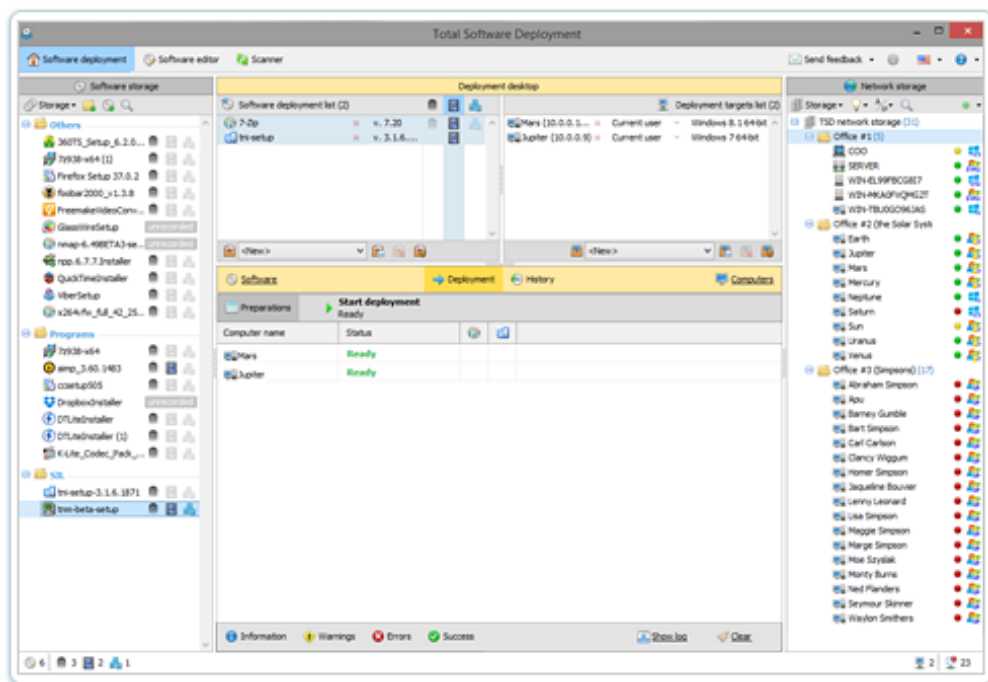


Total Software Deployment

Brochure



Total Software Deployment – managed software deployment for your corporate network.

Remote Software Deployment

Total Software Deployment makes deploying software on any number of computers a blast. Software inventory management, automatic network scanning, and concurrent deployment of multiple types of installation packages make TSD a clear winner among remote deployment tools.



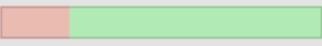
Integrated Software Inventory Management

Total Software Deployment enables organization-wide visibility across network computers, maintaining a comprehensive list of software installed on all computers in your corporate network.

Task	Status
10.0.0.0/24	80% Scanning...
10.0.0.3 (Venus)	95% Finishing scan...
10.0.0.1	No open ports
10.0.0.2	Port scan finished, waiting...
10.0.0.14 (EARTH)	70% Scanning registry...
10.0.0.11 (Jupiter)	40% Scanning software...
10.0.0.15	Port scan finished, waiting...

Flexible MSI & EXE Application Deployment

Ever wish for a system more flexible than Microsoft® deployment tools? Being restricted to the managed deployment of MSI packages only is no fun. Total Software Deployment supports all types of installers including MSI and all popular third-party installers, enabling fully automated, silent deployment of just about any package.

Software		Deployment		History		Computers	
Deploying... 44%		 Cancel					
Computer name	Status						
WIN-RD5V3661EQ0	Deploying software...						
WIN-IGQ43ETV5BR	Installing service...						
WIN-DZLSWXS9GDY	Deploying software...						
VISTAX64	Deploying software...						

Three Types of Deployment Methods

Not all installation packages are created equal. Some have pre-configured options for silent setup, while others may come with no support for automated deployment at all. TSD offers the choice of as many as three different methods of creating an automated deployment package for your network, allowing you to remotely deploy software products that were never meant.

Main Installer (avira_free_antivirus.exe)

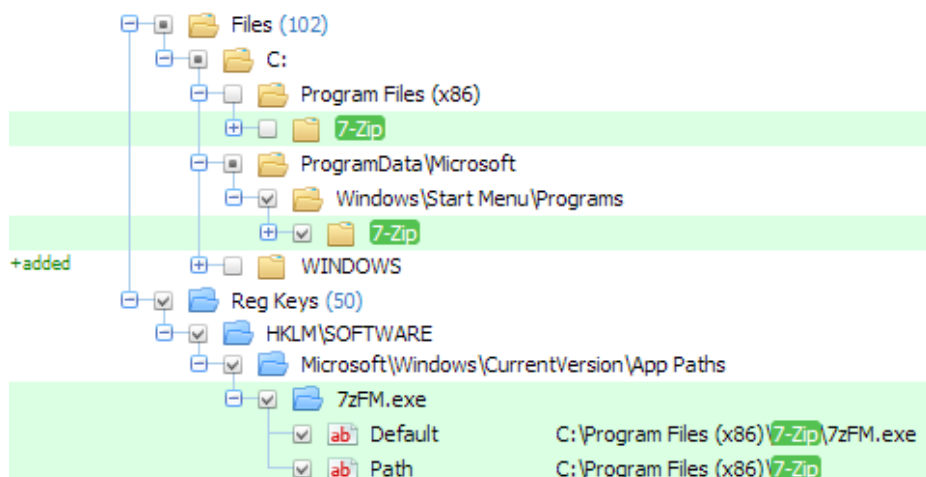
Parameters: Installer type:

Very Silent
 Disable Startup Prompt
 No Restart
 Silent
 Language
 Install Path
 No Icons

Use empty command line Test run (local)

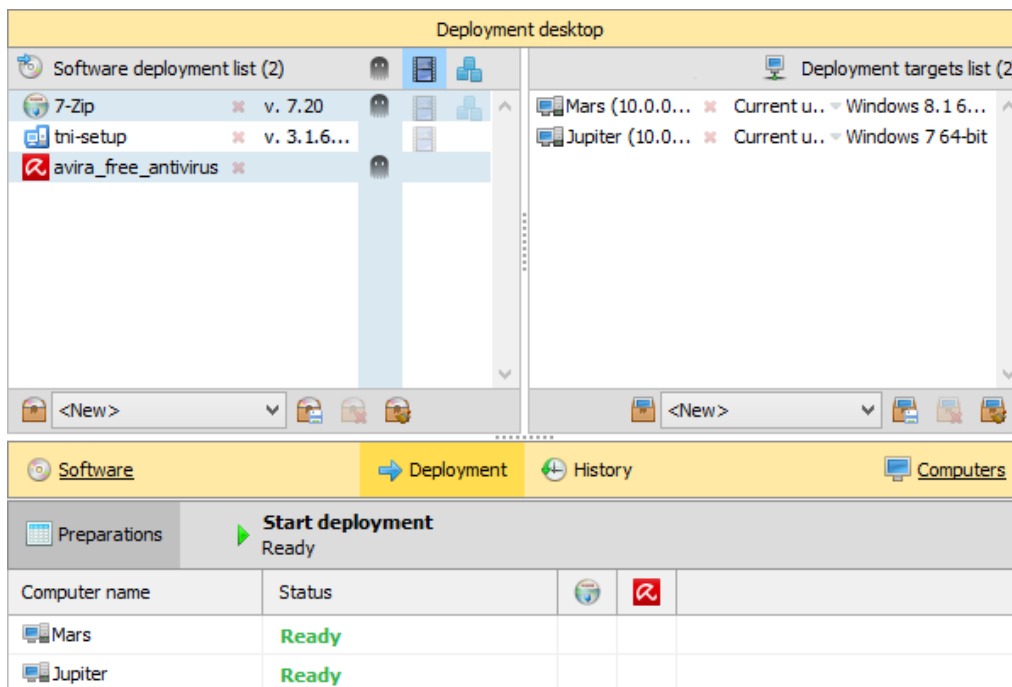
Recorded on May 19, 2015 - 12:06 PM; OS: Windows 8 64-bit;

Contains: 2 steps, 5 actions; Size: deployment file - 10,06 KB, installer(s) - 1,06 MB



And more...

Use the Software update assistant to quickly identify computers with outdated products, maintain deployment history, and do much more!



Price and terms

License prices for Total Software Deployment starts from 90.00 USD. This is a onetime purchase. The licenses are perpetual; there are no subscriptions or annual fees. The support and updates are free.

Read more on this page:

<http://www.softinventive.com/store/total-software-deployment/>

Company

Softinventive Lab was founded back in 2006 by the group of young enthusiasts seeking ways to apply their skills and knowledge, find their place in the sun and express themselves. Time flew by, turning mere desires into passion.

Address:

651 Holiday Drive, Foster Plaza 5, Suite 300, Pittsburgh, PA 15220, United States.

Phones:

Pittsburgh: +1 (412) 928 4717

London: +44 (20) 7193 4266