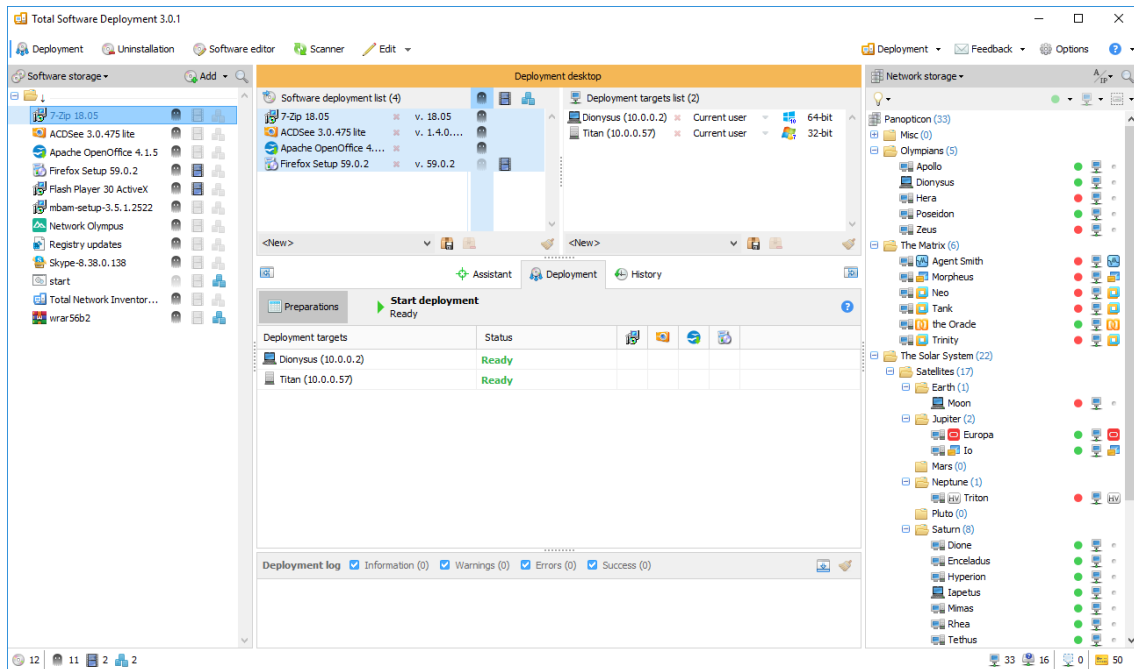


Total Software Deployment 3

Brochure



Total Software Deployment: managed software deployment for your corporate network.

Remote Software Deployment

Total Software Deployment makes deploying software on any number of computers a blast. Software inventory management, automatic network scanning, and concurrent deployment of multiple types of installation packages make TSD a clear winner among remote deployment tools.



Flexible MSI & EXE Application Deployment

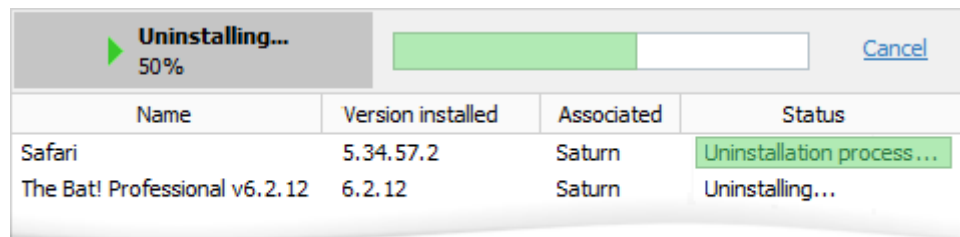
Ever wish for a system more flexible than Microsoft® deployment tools? Being restricted to deploying MSI packages is no fun. Total Software Deployment supports all types of installers including MSI and all popular third-party installers, enabling fully automated, silent deployment of just about any package.

A screenshot of the 'Assistant' window in Total Software Deployment. The window has three tabs: 'Assistant', 'Deployment', and 'History'. The 'Deployment' tab is active, showing a progress bar at 81% and a 'Cancel' button. Below the progress bar is a table with the following data:

Deployment targets	Status	🔄	📄	📁
S2012S (10.0.0.174)	There are errors	✓	✓	✗
WIN_7_64 (192.168.223.142)	Deploying software...	✓	✓	✓
WIN10-64 (192.168.223.134)	Deploying software...	✓	⌚	
WIN-2016PREVIEW (192.168.223.133)	Deploying software...	✓	⌚	

Remote Software Uninstallation

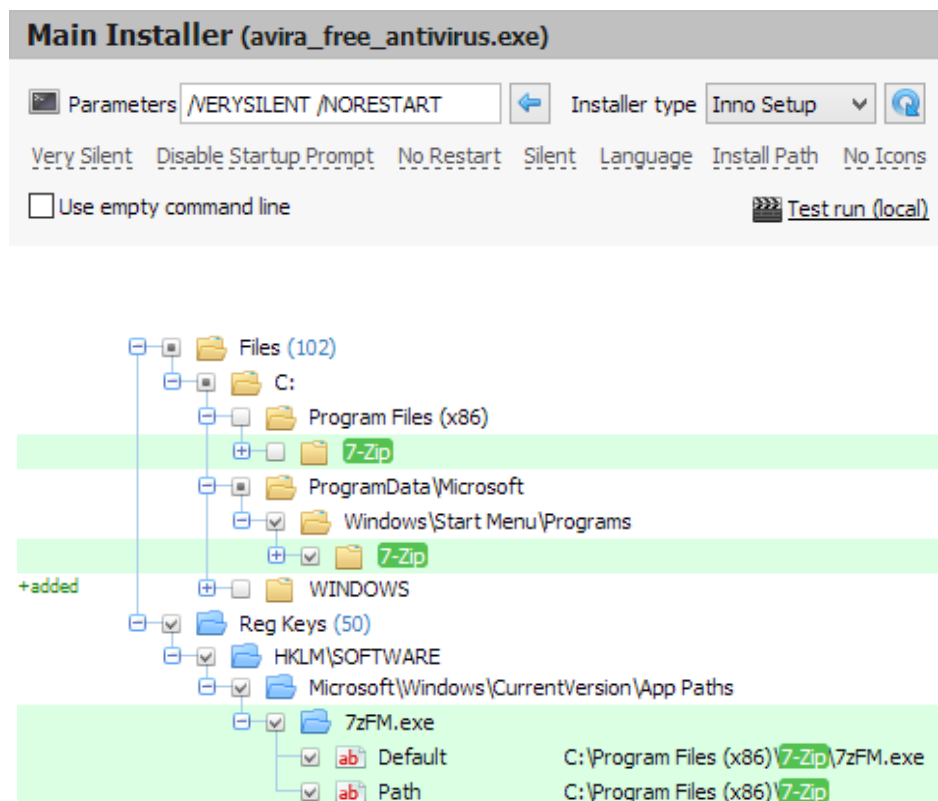
You can also remotely uninstall software from one or multiple computers. The remote uninstall tool supports packages deployed using Total Software Deployment or installed in any other way, allowing network administrators to control which software is required on the network and which must be uninstalled.



Name	Version installed	Associated	Status
Safari	5.34.57.2	Saturn	Uninstallation process...
The Bat! Professional v6.2.12	6.2.12	Saturn	Uninstalling...

Three Types of Deployment Methods

Not all installation packages are created equal. Some have pre-configured options for silent setup, while others may come with no support for automated deployment at all. TSD offers the choice of as many as 3 different methods of creating an automated deployment package for your network, allowing you to remotely deploy software products that were never meant to be.



Main Installer (avira_free_antivirus.exe)

Parameters: Installer type:

Very Silent Disable Startup Prompt No Restart Silent Language Install Path No Icons

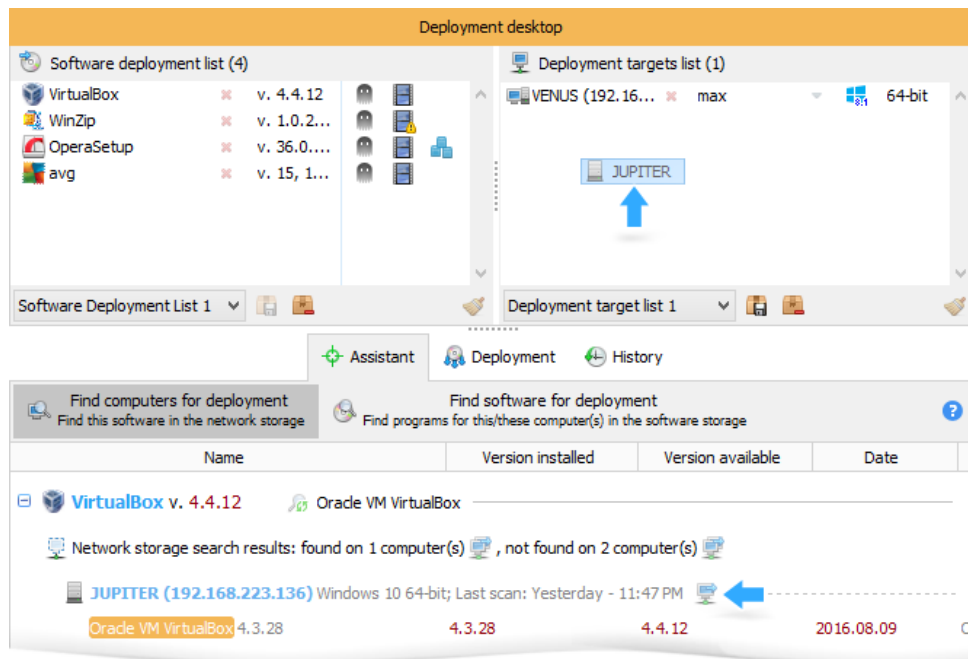
Use empty command line

Files (102)

- C:
 - Program Files (x86)
 - 7-Zip
 - ProgramData\Microsoft
 - Windows\Start Menu\Programs
 - 7-Zip
- +added
 - WINDOWS
 - Reg Keys (50)
 - HKLM\SOFTWARE
 - Microsoft\Windows\CurrentVersion\App Paths
 - 7zFM.exe
 - Default: C:\Program Files (x86)\7-Zip\7zFM.exe
 - Path: C:\Program Files (x86)\7-Zip

And more...

Use the Software update assistant to quickly identify computers with outdated products, maintain deployment history, and do much more!



Price and terms

License prices for Total Software Deployment are 90.00 USD and up. This is a one-time purchase. The licenses are perpetual; there are no subscriptions or annual fees. The support and updates are free.

Read more on this page:

<http://www.softinventive.com/store/total-software-deployment/>

Company

Softinventive Lab was founded back in 2006 by the group of young enthusiasts seeking ways to apply their skills and knowledge, find their place in the sun and express themselves. Time flew by, turning mere desires into passion.

Address:

651 Holiday Drive, Foster Plaza 5, Suite 300, Pittsburgh, PA 15220, United States.

Phones:

Pittsburgh: +1 (412) 928 4717

London: +44 (20) 7193 4266