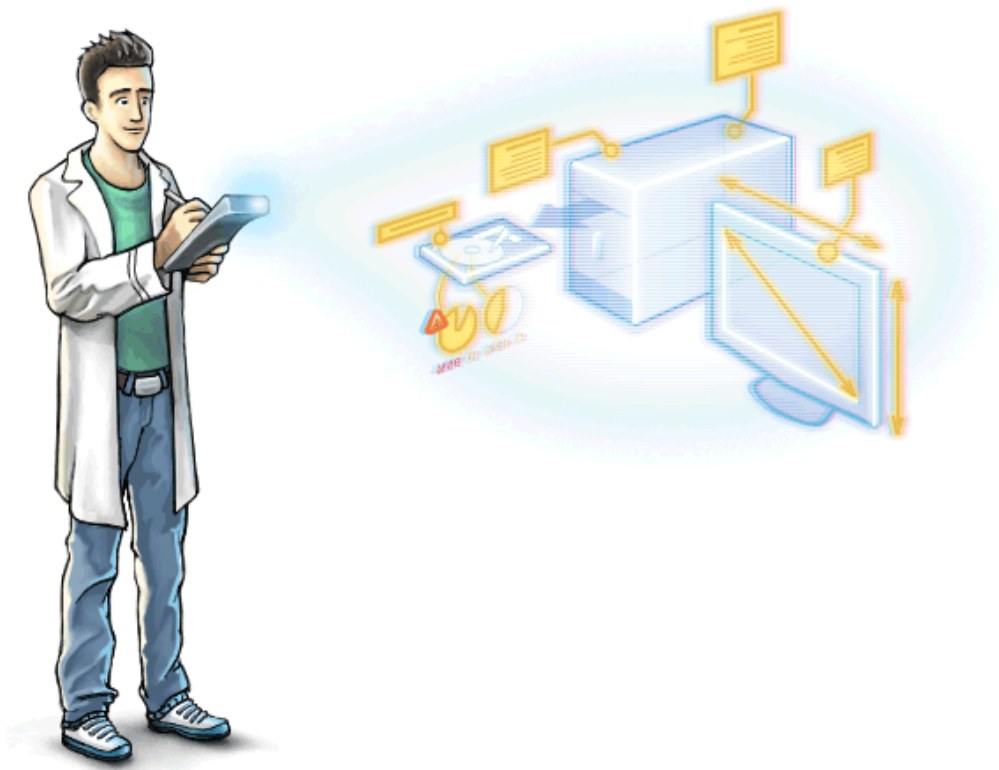


Total Network Inventory 4

Brochure



Introducing **Total Network Inventory 4**, PC audit and software inventory solution by Softinventive Lab.



Network scanning

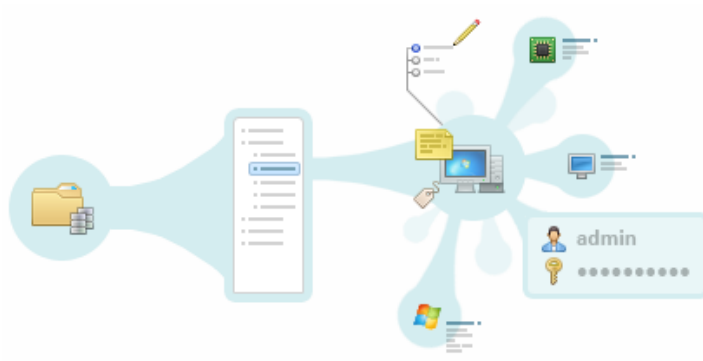
Windows, OS X, Linux, FreeBSD, and **ESX/ESXi**-based computers and servers can be scanned without preinstalled agents – you just need to know the administrator's password. Scan single nodes, network address ranges, or **Active Directory** structure.

| Task | Status |
|---------------------|--------------------------------|
| 10.0.0.0/24 | 89% Scanning... |
| 10.0.0.3 (Venus) | 95% Finishing scan... |
| 10.0.0.1 | No open ports |
| 10.0.0.2 | Port scan finished, waiting... |
| 10.0.0.14 (EARTH) | 70% Scanning registry... |
| 10.0.0.11 (Jupiter) | 40% Scanning software... |
| 10.0.0.15 | Port scan finished, waiting... |



Inventory

Each computer only takes up several dozen kilobytes in the centralized TNI storage. Group assets, add comments to them, and attach additional information. Total Network Inventory 4 will show your network in all its beauty!





Reports

Create flexible reports on different data categories. Build table reports with hundreds of available data fields using the convenient tool. Reports can be copied, exported, or printed, and the search feature shows the results before you even finish typing.

| # | Alias | Name | Max. visible image size, " | Video |
|---|-----------|--------------------------|----------------------------|---------|
| 1 | Eudypates | SyndMaster 932B/191B/... | 38 cm x 30 cm (19") | Analog |
| 2 | Earth | SyndMaster 932B/191B/... | 38 cm x 30 cm (19.1") | Digital |
| 3 | Jupiter | SyndMaster | 47 cm x 30 cm (22") | Digital |
| 4 | Mars | SyndMaster 932B/191B/... | 38 cm x 30 cm (19.1") | Digital |
| 5 | Mars | SyndMaster 932B/191B/... | 38 cm x 30 cm (19.1") | Analog |
| 6 | Mercury | Color LCD | 48 cm x 27 cm (22") | Digital |



Software accounting

All software from your Windows and Mac OS devices is gathered in a single place with comprehensive search and filtering capabilities. Browse, organize, and discover your software and installations, star important items, assign tags, add comments, and much more. Store data on all the software licenses you own along with their parameters, license keys, expiration dates, prices, and all the accompanying documents, such as invoices and EULAs.

The screenshot shows a software accounting application interface. At the top, there is a search bar with the text "total" and a magnifying glass icon. Below the search bar, there are two columns: "Title & version" and "Copies". The list of software items is as follows:

| Title & version | Copies |
|--|--------|
| Total Commander | 5 |
| Total Network Inventory 3 | 8 |
| Total Network Inventory 1.6.7 (build 2750) | 1 |
| Total Network Monitor | |
| Total Finder 1.1.11 | |

A search filter is applied to the "Copies" column, showing "Find publishers...". The results of the search are:

| Publisher | Copies |
|------------------------|--------|
| All publishers | 1861 x |
| Microsoft Corporation | 196 |
| Softinventive Lab Inc. | 14 |
| ABBYY Software | 27 |
| ACD Systems Ltd. | 1 |

Live licensing status

Make sense of all the critical data on software distribution and licensing in your network. See what software is currently licensed or not. Get exhaustive info about licensing problems.

| Computers & keys... | Computer | Status |
|---|-------------------------|--------------|
| <input type="button" value="Add key"/> ∞ Installations under this license 9 ✓ Compliant 6 ⚠ Problems 3 ↑ Over limit 3 Licensing summary Licensing problems Spare activations | 7GHDB-WC3MK-3P7XT-8TG6W | |
| | Agent Smith | ↑ Over limit |
| | Tank | ↑ Over limit |
| | the Orade | ↑ Over limit |
| | Trinity | ✓ Compliant |
| | B7C4M-WT2FC-BP6DF-XDKW9 | |
| | Poseidon | ✓ Compliant |
| | FTPXM-DDG9R-PMJYD-H97GT | |
| | Zeus | ✓ Compliant |
| | MBX4P-WCFFP-3DY3F-BKDJF | |







Tracking

Track the software presence on specific devices. You can mark a software program as Must-have or Forbidden for explicit sets of computers.

| Must-have for selected | | Total: 2 | Forbidden for selected | | Total: 4 |
|-----------------------------------|-----------|----------|-----------------------------------|-----------|----------|
| Drag computers here to track them | | | Drag computers here to track them | | |
| Violations 1 | | | Violations 0 | | |
| Jupiter | not found | × | Ok | 4 | |
| Ok | 1 | | Dionysus | not found | × |
| Poseidon | found | × | Apollo | not found | × |
| | | | Zeus | not found | × |
| | | | Hera | not found | × |

Change log

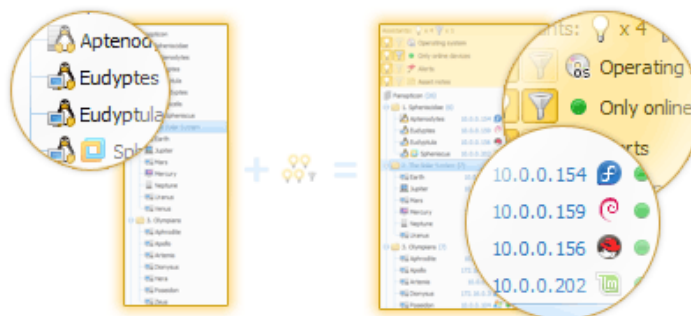
Detect and browse changes in hardware and software. Know when an application is installed, uninstalled or updated on any computer in your network, see hardware being connected or removed, disk space usage dynamics and much, much more.

| | |
|---|---|
|  |  Philips 273EL(27inch Wide LCD MONITOR 273E3L) |
|  |  RAM slot #0 Capacity: 512 MB → 1024 MB |
|  |  JM20336 SATA, USB Combo |



And more...

Create a database of your network users; store a number of passwords for different assets and protocols; follow the online status of assets in real time; schedule data gathering; build network maps. These and many other features of TNI 4 will save you a lot of effort and stress during network audits.



Price and terms

License prices for Total Network Inventory 4 start at 90.00 USD. All users have a right to free support and license renewals with a discount.

Read more on this page:

<http://www.softinventive.com/store/total-network-inventory/>

Company

Softinventive Lab was founded back in 2006 by a group of young enthusiasts seeking ways to apply their skills and knowledge, find their place in the sun and express themselves. Time flew by, turning mere desires into passion.

Address:

651 Holiday Drive, Foster Plaza 5, Suite 300, Pittsburgh, PA 15220, United States.

Phones:

Pittsburgh: +1 (412) 928 4717

London: +44 (20) 7193 4266