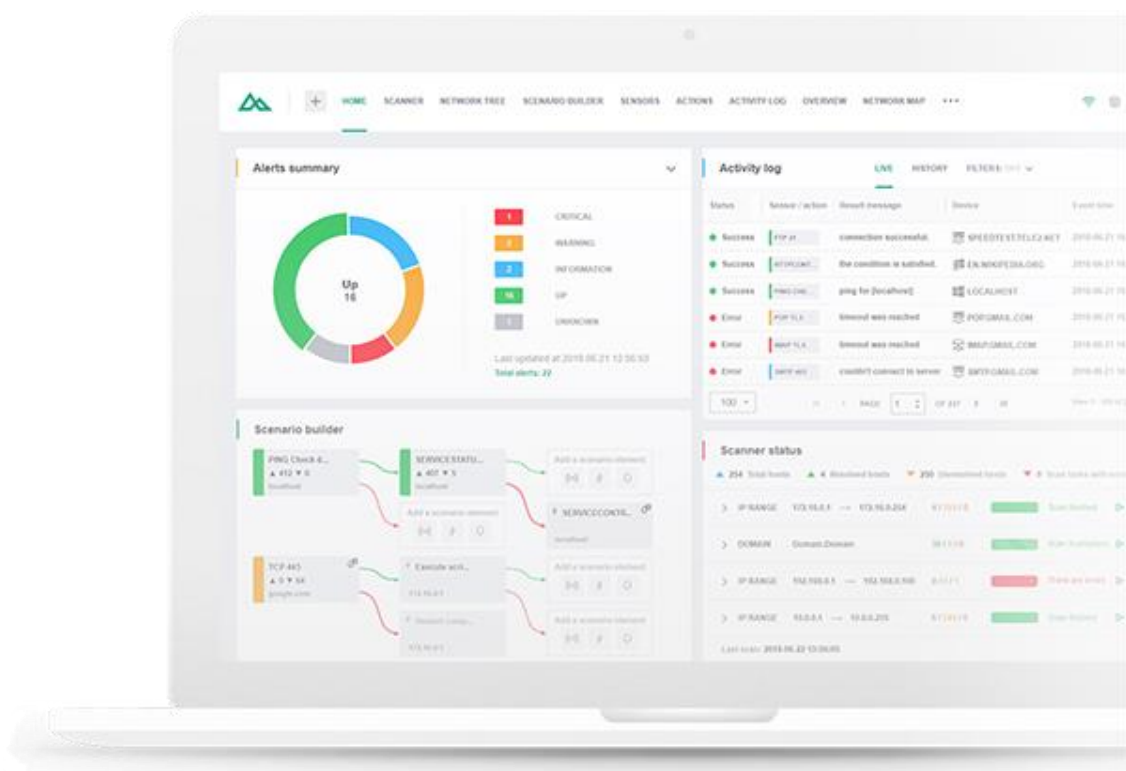


Network Olympus

Brochure



Network Olympus is a powerful tool for network monitoring. It is designed for continuous monitoring of individual computers, local networks, and other services that need constant management.

Network Olympus takes care of the system uptime, spots potential issues, and alerts you about them. It eliminates the issues in a timely matter and provides logs on the failure in the form of a detailed report.

Sensors

Network Olympus relies on sensors, the monitoring indicators that establish connections with the devices and receive the necessary data. It collects and analyzes a broad variety of facts about your network via its protocols. Our software uses sensors to get information about services, event logs, files, etc. on a remote device. Any other similar data gets easily extracted as well. Network Olympus offers over 20 sensors.

Actions & Notifications

Network Olympus executes a set of predefined actions in case of an abnormality. Our software makes sure to notify you about the issue quickly and perform the first aid to neutralize the consequences. Depending on your settings, it will run a script, reboot the remote computer, restart the service, launch the specified application, or log all the event data to study the problem in the future. If you set an emergency action, Network Olympus will act depending on the sensor reaction and operation results.

Action list				
Action	Caption	Associated devices	Action statistics	Success scenario element
⚡ SERVICE...	WinDefend restart	LOCALHOST	▼ - 1	IMAP
⚡ RE STAR...	Swiith	172.16.0.1	▼ - 82	TCP
⚡ EXECUT...	JavaScript	172.16.0.1	▲ - 1	
⚡ EXECUT...	Power Shell Script	172.16.0.5	▼ - 19	
⚡ SERVICE...	Restart service	SERVER	▼ - 1	⚡ DELAY
⚡ DELAY		172.16.0.4	▲ - 17	
⚡ DELAY		LOCALHOST	▲ - 5	
⚡ SERVICE...	Defender	NAS	▼ - 2	
⚡ RUN AP...		172.16.0.6	▲ - 2	⚡ RE STAR...
⚡ RE STAR...		SERVER	▼ - 1	

Branching Scenarios

Scenario Builder can create complex multi-branch scenarios for a consistent monitoring experience. Each branch is easily managed by adding notifications, sensors, and actions.

The intuitive interface makes it convenient to create complicated scripts. Scenario Builder allows you to link your monitoring scenarios to a device or a group of devices.



Activity Log

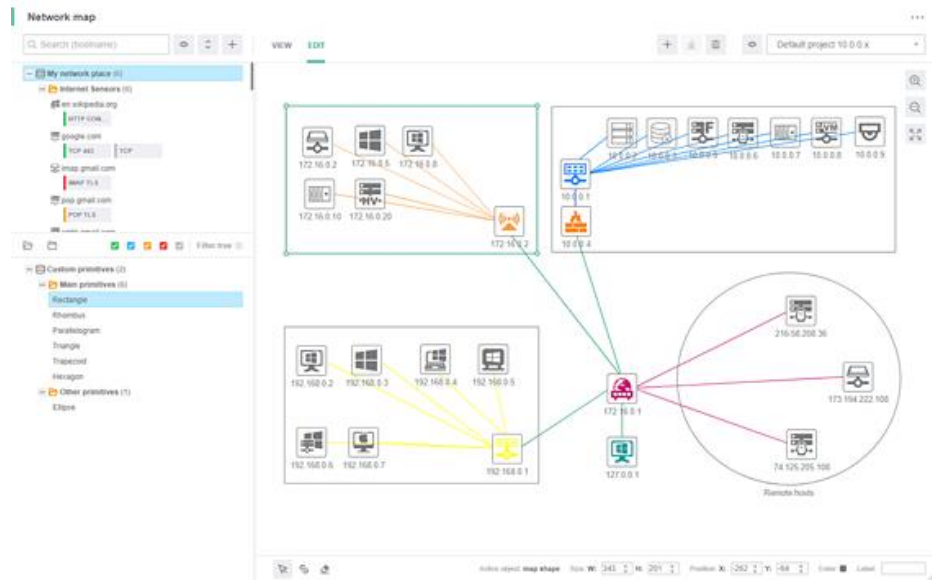
Network Olympus keeps a log of all the vital sensor information by tracking all enabled monitors. You can access any piece of this data via the Activity Log widget to analyze processes and find what causes your performance issues.

The screenshot shows the 'Activity log' interface with the 'HISTORY' tab selected. It includes filters for 'Error', 'All', 'Enter result message', and 'All'. The date range is set from 2018-06-27 03:40 to 2018-06-28 00:00. The table below lists several error entries:

Status	Sensor / action / notification	Result message	Device
Error	REGISTRY ...	Invalid input parameters.	SERVER
Error	POP TLS	Timeout was reached	POP.GMAIL.COM
Error	IMAP TLS	Timeout was reached	IMAP.GMAIL.COM
Error	EXECUT...	Script was run with errors.	172.16.0.5
Error	SMTP 465	Couldn't connect to server	SMTP.GMAIL.COM
Error	SERVICE...	Invalid input parameters.	NAS

Network Mapping

Network mapping is a way to graphically represent all the elements of your monitoring project, as well as the connections between them. It automatically displays the status of any sensor allowing you to monitor devices from a comprehensive map.



Price and terms

License prices for Network Olympus: Monitoring are 290.00 USD and up. This includes free support and an ability to renew the license each year for a fraction of the initial cost. A completely free version is also available.

Read more on this page:

<https://www.network-olympus.com/store/>

Company

Softinventive Lab was founded back in 2006 by the group of young enthusiasts seeking ways to apply their skills and knowledge, find their place in the sun and express themselves. Time flew by, turning mere desires into passion.

Address:

651 Holiday Drive, Foster Plaza 5, Suite 300, Pittsburgh, PA 15220, United States.

Phones:

Pittsburgh: +1 (412) 928 4717

London: +44 (20) 7193 4266